

## PARTICULAR REGULATIONS

ECO energy Rally Bohemia

29. 6. – 1. 7. 2018

The E-Rally Regularity Cup (ERRC) is based on the International Sporting Code currently in application and on the latest version of the ERRC Sporting and Technical Regulations. For all items not mentioned in this document, refer to the FIA website

### 2018 FIA E-Rally Regularity Cup

Autoklub Česká Lípa v AČR & Autodrom Promotion s.r.o.  
Sosnová 200  
470 01 Česká Lípa



**ŠKODA**



## 1. PROGRAMME – IMPORTANT INFORMATION

<b>Publication of Regulations:</b>	30. 4. 2018
<b>Entries opening:</b>	30. 4. 2018
<b>Entries closing:</b>	20. 6. 2018, 18:00
<b>Publication of participant's list:</b>	25. 6. 2018 www.rallybohemia.cz
<b>Distribution of Road Book:</b>	29. 6. 2018, 8:00 – 9:30 Sychrov chateau GPS: 50.626655, 15.087226 29. 6. 2018, 17:30 – 18:30 House of Culture Ml. Boleslav GPS: 50.413520, 14.912435
<b>Concentration Leg:</b>	29. 6. 2018 Runs exactly according to race track. Crews can try the track in advance. <b>(optional)</b>
<b>Administrative Checks:</b>	29. 6. 2018, 8:00 – 9:30 Sychrov chateau GPS: 50.626655, 15.087226
<b>Administrative and Technical Checks:</b>	29. 6. 2018, 17:30 – 18:30 House of Culture Ml. Boleslav GPS: 50.413520, 14.912435
<b>Posting of Starting List:</b>	29. 6. 2018, 21:00 www.rallybohemia.cz
<b>Competitors and Officials briefing &amp; raut:</b>	29. 6. 2018, 18:30 House of Culture Ml. Boleslav GPS: 50.413520, 14.912435
<b>Ceremonial start:</b>	29. 6. 2018, 20:00 Museum ŠKODA AUTO Ml. Boleslav GPS: 50.418811, 14.914020
<b>Acceleration test start:</b>	29. 6. 2018, 20:10 Museum ŠKODA AUTO Ml. Boleslav GPS: 50.418811, 14.914020 <b>(compulsory, show only)</b>
<b>1st Car start:</b>	30. 6. 2018, 10:00 Sychrov chateau GPS: 50.626655, 15.087226

<b>Posting of Leg 1 Unofficial Results:</b>	30. 6. 2018, 20:00 www.rallybohemia.cz
<b>1st Car start of Leg 2:</b>	1. 7. 2018, 10:00 Sychrov chateau GPS: 50.626655, 15.087226
<b>1st Car finish:</b>	1. 7. 2018, 12:07 STOP SS Staroměstská GPS: 50.410369, 14.902301
<b>Posting of Provisional Results:</b>	1. 7. 2018, 13:15 www.rallybohemia.cz
<b>Prize-Giving Ceremony:</b>	1. 7. 2018, 13:50 Old Town Square, Mladá Boleslav GPS: 50.410970, 14.902721
<b>Accommodations:</b>	29. 6. 2018 – 1. 7. 2018 EA Chateau Hotel Sychrov **** GPS: 50.626655, 15.087226 <b>(included in entry fee)</b>

<b>Monday 30. 4. 2018</b>		
	Publication of Regulations	www.rallybohemia.cz
	Entries opening	www.rallyforms.com
<b>Wednesday 20. 6. 2018</b>		
18:00	Entries closing	www.rallyforms.com
<b>Monday 25. 6. 2018</b>		
	Publication of participant´s list	www.rallybohemia.cz
<b>Friday 29. 6. 2018</b>		
	Concentration Leg	Sychrov – Sychrov – Mladá Boleslav
8:00 – 9:30	Distribution of Road Book	Sychrov chateau
8:00 – 9:30	Administrative Checks	Sychrov chateau
10:00 – 15:00	Recharging	Sychrov chateau
10:00 – 15:00	Lunch, Chateau tour, accommodation	Sychrov chateau
16:00 – 20:00	Recharging	Parking lot, next to H. of Culture MB
17:00 – 17:30	ŠKODA AUTO Museum tour	Museum ŠKODA AUTO MI. Boleslav

17:30 – 18:30	Administrative and Technical Checks	House of Culture Ml. Boleslav
18:30 – 19:30	Competitors and Officials briefing & raut	House of Culture Ml. Boleslav
20:00	Ceremonial start	Museum ŠKODA AUTO Ml. Boleslav
20:10	Acceleration test start	Museum ŠKODA AUTO Ml. Boleslav
21:30 – 10:00	Recharging	Sychrov chateau
21:00	Posting of Starting List	<a href="http://www.rallybohemia.cz">www.rallybohemia.cz</a>
22:00	Ultimate time to Parc Fermé IN	Sychrov chateau
<b>Saturday 30. 6. 2018</b>		
8:00 – 9:00	Breakfast	Sychrov chateau
10:00	1st Car start of Leg 1	Sychrov chateau
11:30 – 16:00	Recharging	Sychrov chateau
12:00 – 14:00	Lunch	Sychrov chateau
12:00 – 13:00	Visit of special stage of speed rally	Gardens of Sychrov chateau
17:05	1st Car start of Leg 1, section 2	Sychrov chateau
18:30 – 10:00	Recharging	Sychrov chateau
19:30	Posting of Leg 1 Unofficial Results	<a href="http://www.rallybohemia.cz">www.rallybohemia.cz</a>
19:30 – 21:00	Dinner	Sychrov chateau
<b>Sunday 1. 7. 2018</b>		
8:00 – 9:00	Breakfast	Sychrov chateau
10:10	1st Car start of Leg 2	Sychrov chateau
12:07	1st Car finish	STOP SS Staroměstská, Mladá Boleslav
13:15	Posting of Provisional Results	<a href="http://www.rallybohemia.cz">www.rallybohemia.cz</a>
13:50	Prize-Giving Ceremony	Old Town Square, Mladá Boleslav
14:00 – 17:00	Recharging	Parking lot, next to House of Culture
12:15 – 13:30	Lunch	House of Culture Ml. Boleslav

## 2. Organiser

### Organiser's data

<b>Name:</b>	Autoklub Česká Lípa v AČR & Autodrom Promotion s.r.o.
<b>Address:</b>	Sosnová 200, 470 01, Česká Lípa Czech Republic
<b>Web Site:</b>	<a href="http://www.rallybohemia.cz">www.rallybohemia.cz</a>
<b>Telephone:</b>	+420 739 960 971
<b>E-mail:</b>	<a href="mailto:brzek@rallybohemia.cz">brzek@rallybohemia.cz</a>
<b>National Sporting Authority:</b>	Autoklub České republiky (Autoclub of the Czech Republic – ACCR) Opletalova 29 110 00 Praha 1 Czech Republic

### Organising Committee:

<b>President:</b>	Pavel Dušánek
<b>Members:</b>	Tomáš Brzek, Petr Pavlát, Jan Šrámek, Jan Peškař, Pavel Vomáčka, Martin Řehák

## 3. Officials

### Stewards

<b>Chairman of the Panel of Stewards:</b>	Rafaelle Pelillo
<b>Steward (1):</b>	Jan Regner
<b>Steward (2):</b>	Pavel Konečný

### Headquarters

<b>Clerk of the Course:</b>	Tomáš Brzek
<b>Deputy Clerk of the Course:</b>	Jiří Veverka
<b>Secretary of the Event:</b>	Jan Mochan
<b>Competitor's Relations Officer:</b>	Jiří Veverka
<b>FIA Technical Delegate:</b>	Carlos Funes
<b>Chief Scrutineer:</b>	Martin Svoboda

<b>Chief Timekeeper:</b>	Stanislav Jelínek
<b>Chief Results Officer:</b>	Lubomír Šperka
<b>Track Chief:</b>	Petr Pavlát
<b>Recharging Manager:</b>	Martin Řehák
<b>Deputy Secretary of the Event:</b>	Jan Peškař
<b>Press Relation Officer:</b>	Pavel Dušánek

## 4. FIA AND OTHER TITLES ELIGIBILITY

### 4.1 FIA titles for which the Event counts:

FIA E-Rally Regularity Cup with the following titles:

- FIA E-Rally Regularity Cup – Driving Test events for Drivers of vehicles in Article 2 in the Technical Regulations.
- FIA E-Rally Regularity Cup – Driving Test events for Co-Drivers of vehicles in Article 2 in the Technical Regulations.
- FIA E-Rally Regularity Cup for Manufactures of vehicles in Article 2 in the Technical Regulations.

### 4.2 Czech Trophy – ECO Regularity Rally

National trophy in conformity with separate Supplementary Regulations (other document).

## 5. VEHICLES ELIGIBLE TO PARTICIPATE

All vehicles must be in conformity with the Technical Regulations of the FIA E-Rally Regularity Cup.

## 6. GENERAL CONDITIONS

### 6.1 The event will be organized in conformity with:

- the FIA International Sporting Code and its appendices;
- the Sporting Regulations of the FIA E-Rally Regularity Cup;
- the applicable prescriptions stated in the National Sporting Regulations; and
- the present Particular Regulations.

The Organizing Committee will ensure that the event complies with all the rules and regulations stated above, and that the event has received all the required administrative authorizations.

### 6.2 Insurance

The Organiser has contracted insurance covering the following risks:

### 6.2.1 Liability insurance of the event organizer

The liability insurance entitles the insured in case of insured event to have the insurer fulfilling claims of the harmed party related to property detriment (damage), or even another detriment to the extent and in the amount specified by law, insurance contracts and the respective insurance conditions, in case insured's obligation to pay reimbursement has arisen.

The insurance covers the legally stipulated responsibility of the organizer for the detriment caused to health or property in relation to the organization of the event or in relation to training for it.

It is agreed that the insurance also covers damage cause by organizer on track event, its equipment and accessories or adjacent land, regardless of whether the property is owned or lease by the organizer or not.

It is agreed that the insurance under this paragraph shall not apply to damage caused to health or property of participant if this damage was caused by a participant (eg. driving mistake).

### 6.2.2 Liability insurance of the event participant

The liability insurance entitles the insured in case of insured event to have the insurer fulfilling claims of the harmed party related to property detriment (damage), or even another detriment to the extent and in the amount specified by law, insurance contracts and the respective insurance conditions, in case insured's obligation to pay reimbursement has arisen.

The insurance covers the statutory duty of the insured event participant to repay the harmed party (third party) detriment specified in DPPOP, in case insured's obligation to repay arose in connection with participation in the event or use of his/her vehicle.

As a third person is considered, among others, an official, officer and technical personal of the organizer at the event, including official officials of relevant international organizations, VIP guests and viewers. In case that this paragraph indicates a person in an employment relationship to the insured, he/she shall be considered as a third party in case he/she is delegated to the event or intended to perform certain functions during the event in accordance with international and national sporting regulations.

It is agreed that insurance does not cover obligation of the insured to compensate the detriment caused to other participants of the event.

## 7. ITINERARY AND LAYOUT

### Concentration Leg:

It is optional and runs exactly accoring to road book

### Leg 1: Sychrov – Malá Skála – Sychrov (125 km)

- 6 Regularity Stages:
  - Vazovec I. (4,87 km),
  - Chloudov I. (5,00 km),
  - Radostín I. (22,22 km),
  - *Recharging*
  - Vazovec II. (4,87 km),
  - Chloudov II. (5,00 km),

- Radostín II. (22,22 km).
- Regularity stages Vazovec I. and II. take place on an open road, the rest on a closed road.

### Leg 2: Sychrov – Podkováň – Mladá Boleslav (84 km)

- 3 Regularity Stages:
  - Klokočka (21,87 km),
  - Cetno (20,69 km),
  - Staroměstská (5,16 km).
- Regularity stage Klokočka take place on an open road, the rest on a closed road

**Total distance of the rally:** 209,09 km

**Total distance of the Regularity Stages:** 112,00 km (53,57 %)

- **Regrouping and recharging:**
  - On Saturday after 63 km (Sychrov chateau)
  - On Sunday after 85 km (Old Town Square, Mladá Boleslav)
- Centre of the rally is located at Sychrov chateau a popular tourist destination in northern Bohemia
- Rich accompanying programme for crews – pre-start gala dinner, lunches, chateau tour, visit of special stage of speed rally.
- Very difficult regularity stages (currently or former stages of speed rally).
- Finish of second leg is located in Mladá Boleslav before official finish of the 45th Rally Bohemia 2018.
- Open air Prize-Giving Ceremony will be common for both rallies – many spectators, fans of motorsport, representatives of sponsors.
- Parc Fermé for the first leg will be situated in Sychrov chateau (closed area).
- Parc Fermé for the second leg will be situated in the center of Mladá Boleslav city (Old Town Square).

## 8. RUNNING OF THE EVENT

### 8.1 Nature of the event

The ECO energy Rally Bohemia is an E-Rally Regularity event. Each competitor will collect penalty points from the “Regularity Stages” and from the road connecting the sections (Time Control penalties) in accordance with the present Supplementary Regulations and the Bulletins, which may be issued at a later stage.

### 8.2 Start, Finish and Parc Fermé

The start signal for the event will be given at Sychrov chateau (Parc Fermé OUT), Saturday, 30. 6. 2018. The first car will start at 10:00.

During the overnight stay and after the finish the cars will remain in the Parc Fermé, which they will enter as soon as they finish a Leg.

The starting sequence will follow the participation number and the cars will start at one-minute intervals.



### 8.3 Timing equipment and Tracking system

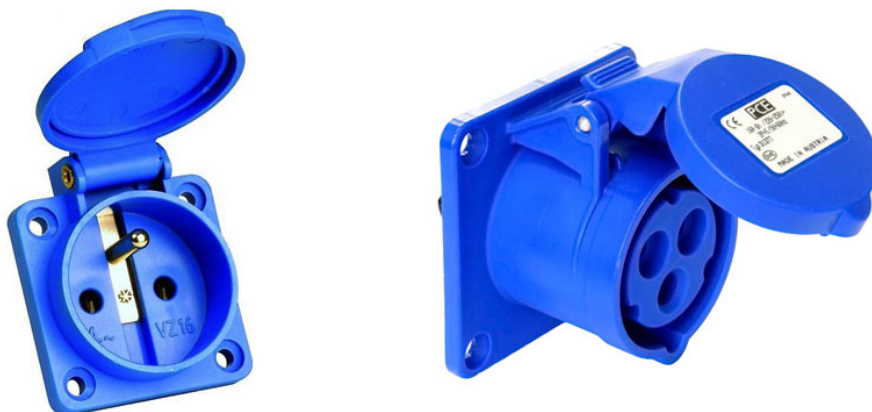
All cars must be equipped from the scrutineering until Parc Fermé open (on Saturday) with two data processing units. These units are used for results processing, for tracking any road book deviations and for tracking any breach of the traffic rules (eg. speeding).

Competition cars not equipped with monitoring device GPS will not be allowed to start.

Deposit for GPS timekeeping and tracking system: 1 000 CZK (40 EUR)

## 9. CHARGING (BEV/PHEV)

The Organising Committee will supply in each Parc Fermé for recharging electric power 230V/16A (1 phase). Connection will be to basic socket or „caravan“ socket (CEE 321/031).



### 9.1 Parc Fermé

Friday – Saturday (overnight), Saturday (regrouping), Saturday – Sunday (overnight):

Sychrov chateau

GPS: 50.626655, 15.087226

Sunday:

Old Town Square MI. Boleslav

GPS: 50.410970, 14.902721

## 10. ENTRY PROCEDURE AND FEES

The amount of the entry fee is fixed for each crew comprising two people (driver and co-driver, or driver and navigator):

- With the optional advertising proposed by the Organiser: 480 EUR
- Without the optional advertising proposed by the Organiser: 960 EUR

The entry fee includes following:

Material / Service	Quantity
<b>Particular Regulations</b>	<a href="http://www.rallybohemia.cz">www.rallybohemia.cz</a>
<b>Road Book</b>	1 pc
<b>Car designation</b>	1 set
<b>Crew designation</b>	2 pcs
<b>Accommodation at EA Chateau Hotel Sychrov ****, from Friday to Sunday</b>	2 persons
<b>Lunch during the Concentration Leg</b>	2 persons
<b>Ticket to pre-start gala dinner with reception</b>	2 pcs
<b>Lunch during the Leg 1</b>	2 persons
<b>Dinner after the Leg 1 finish</b>	2 persons
<b>Lunch during the Leg 2</b>	2 persons
<b>Ticket to Sychrov chateau tour</b>	2 pcs
<b>Ticket to ŠKODA AUTO Museum</b>	2 pcs
<b>Souvenir item</b>	2 pcs

## 10.2 Refund Entry Fee

Entry fees will be refunded in full:

- If the entry is not accepted.
- the event is cancelled.

Organiser will refund 50 % of the entry fee to them who excused seven (7) days before start of administrative check.

## 10.2 Crew documents

A crew comprises one driver and one co-driver, or one driver and one navigator. Both must be a holder of the following documents:

- Driving licence according to the entered vehicles (not applicable for the navigators only).
- Any grade of FIA licence, issued by their ASN, or
- a FIA licence, grade D (or equivalent), obtained for the event, and valid for its duration, which has been issued by their ASN or by the organizer's ASN (with the written permission of the competitor's ASN) and handed over to the participants at the latest during the administrative checks. It will be subject to the payment of a fee of 630 CZK (25 EUR) + personal insurance 300 CZK (12 EUR) or according the competitor's ASN. Personal

insurance for foreign participants with licence of organizer's ASN costs 3000 CZK (120 EUR).

- Vehicle document permitting its free circulation on public roads.
- Should it be applicable, a vehicle document required in the Technical Regulations of the FIA E-Rally Regularity Cup.
- Vehicle valid insurance certificate in accordance with the traffic Code.

### 10.3 Entry Form

Any person, or legal entity, wishing to participate to the event must submit to the Event secretariat, a properly filled-in entry form on [www.rallybohemia.cz](http://www.rallybohemia.cz), together with all other requested documents, photos, etc. before Monday, 20. 6. 2018, 18:00. Entry form must be signed by crew at administrative checks.

### 10.4 Limit of participants

The number of participants is limited to a total of 40 entries. All entry forms received after the above number of vehicles has been accepted will be entered on a reserve list.

## 11. ADVERTISING PROMOTION AND PUBLICITY

### 11.1 Official Supporter

The organisation of the event is supported by ŠKODA AUTO a. s., Global Assistance and AVE, the logos of which must, as a matter of obligation, be displayed on the competition numbers and on any other promotional material intended to be placed on vehicles. Optional advertising material can be proposed by the organisers.

### 11.2

During the administrative checks, the Organising Committee will provide each crew with two (2) rally plates and their competition numbers, which must be displayed on the cars in an area covering 67 cm x 17 cm.

### 11.3

The Organiser will provide the participants the following material and services:

- participation in rally
- third party liability insurance
- car and crew designation
- roadbook with map
- professional timekeeping and processing of results
- commemorative plaque
- souvenir trophies for winners
- ticket to pre-start gala dinner with reception
  - House of Culture, Mladá Boleslav
  - GPS: 50.413520, 14.912435
- Lunch during Concentration Leg
  - Sychrov chateau

- GPS: 50.626655, 15.087226
- lunch during the Leg 1
  - Sychrov chateau
  - GPS: 50.626655, 15.087226
- dinner after the Leg 1 finish
  - Sychrov chateau
  - GPS: 50.626655, 15.087226
- lunch during the Leg 2
  - House of Culture, Mladá Boleslav
  - GPS: 50.413520, 14.912435
- Accommodations
  - provided at EA Chateau Hotel Sychrov \*\*\*\*
  - included in entry fee
  - from Friday to Sunday
  - GPS: 50.626655, 15.087226
  - <https://www.hotelsychrov.cz/en/>

## 12. GENERAL CLASSIFICATION, FIA E-RALLY REGULARITY CUP POINTS, AWARDS

### 12.1 FIA Classifications

The following classifications will be submitted to the FIA for the allocation of FIA E-Rally Regularity Cup points:

- Regularity Tests
- Road Penalties
- Final Classification – Drivers, Co-Drivers, and Manufactures

The classification statements must contain the name and the date of the event; the first name, surname and nationality of Competitors, Drivers and Co-Drivers; the Vehicle Manufacturer as should be listed in the Manufacturers' Cup classification; and the Road penalty points, the Regularity Stages penalty points and the sum of penalty points.

### 12.2 Trophies

For final Classifications as stated in Article 12.1 above, trophies will be awarded to at least the three first placed competitors (Driver and Co-Driver). The trophies are of free design, but should reflect the importance of the Event. They will be provided by the Organiser and must show:

- a) The FIA E-Rally Regularity Cup official logo.
- b) The official name of the event and/or the title sponsor's logo.
- c) The driver's position.

The Organiser is free to include special trophies.

## 13. PROTEST, APPEALS

The amount of the protest fee is 150 EUR.

Protests against the preliminary official results of the Event must be lodged, in writing, in accordance with the prescription set in the ISC with the Clerk of the Course within 30 minutes of the moment of their posting on the official notice board. Upon the expiration of this time period, the preliminary results become final.

Every protest is eligible to be examined by the Stewards of the Event only if it is accompanied by the aforementioned protest fee defined in this article, which is not refundable should the protest fail to be upheld.

For the National Court of Appeal, the fee is 300 EUR.

For the FIA Court of Appeal, the fee is 3 000 EUR.

## 14. APPLICATION AND INTERPRETATION OF THE REGULATIONS

In case of dispute over the interpretation of the regulations, the English text will prevail.

### APPENDICES

- APPENDIX 1 – Time Schedule
- APPENDIX 2 – Competitors relations officer plan

ASN visa number **AE00218** on **6<sup>th</sup> April 2018**



## APPENDIX 1 – Time Schedule

**ENEC Saturday 30<sup>th</sup> June 2018 / Sobota 30. 6. 2018****LEG 1 / 1. ETAPA**

SS/RZ TC/ČK	Location Místo	SS dist. RZ délka	Liaison dist. Trať bez RZ	Total dist. Spoj. úsek	Target time Jízdní doba	First car due Čas 1. jezdce
29.6. Ceremonial start Mladá Boleslav - muzeum Škoda Auto						20:00
29.6. Exhibition akceleration 200 meters						20:10
29.6. All cars must be returned to Parc Ferme Sychrov no later than						22:00
0	<b>START - Sychrov</b>					<b>10:00</b>
	Jeníšovice		5,23	5,23		
<b>RS1</b>	<b>Vazovec I.</b>	<b>4,87</b>				
2	Prosička		10,49	15,36	0:30	10:30
<b>RS2</b>	<b>Chloudov I.</b>	<b>5,00</b>				
3	Malá Skála		13,39	18,39	0:30	11:00
<b>RS3</b>	<b>Radostín I.</b>	<b>22,22</b>				
3A	Regrouping IN		1,29	23,51	0:35	11:35
	Regrouping (Sychrov)	32,09	30,40	62,49	5:30	
3B	Regrouping OUT					17:05
	Jeníšovice		5,23	5,23		
<b>RS4</b>	<b>Vazovec II.</b>	<b>4,87</b>				
5	Prosička		10,49	15,36	0:30	17:35
<b>RS5</b>	<b>Chloudov II.</b>	<b>5,00</b>				
6	Malá Skála		13,50	18,50	0:30	18:05
<b>RS6</b>	<b>Radostín II.</b>	<b>22,22</b>				
6A	Parc Ferme IN		1,29	23,51	0:35	18:40
	Parc Ferme (Sychrov)	32,09	30,51	62,60		

Section 1

Section 2

Day 1 totals

64,18

60,91

125,09

51,31%

**ENEC Sunday 1<sup>st</sup> July 2018 / Neděle 1. 7. 2018****LEG 2 / 2. ETAPA**

SS/RZ TC/ČK	Location Místo	SS dist. RZ	Liaison dist. Trať bez RZ	Total dist. Spoj. úsek	Target time	First car due Čas 1. jezdce
6B	Parc Ferme OUT					10:10
	Nechálov		7,58	7,58		
<b>RS7</b>	<b>Klokočka</b>	<b>21,87</b>				
8	Podkováň		20,04	41,91	1:01	11:11
<b>RS8</b>	<b>Cetno</b>	<b>20,87</b>				
9	Belvedér		8,46	29,33	0:42	11:53
<b>RS9</b>	<b>Staroměstská</b>	<b>5,16</b>				
10	Finish, Regrouping IN		0,10	5,26	0:14	12:07
	Regrouping OUT					13:40
<b>Podium Ceremony - Staroměstské náměstí / Staroměstské Square</b>						<b>13:50</b>
	Parc Ferme IN					14:00

Section 3

Day 2 totals

47,90

36,18

84,08

56,97%

**TOTALS OF THE RALLY**

Leg	SS	SS	Liaison	Total	%
1	6	64,18	60,91	125,09	51,31%
2	3	47,90	36,18	84,08	56,97%
<b>Overall Totals</b>	<b>9</b>	<b>112,08</b>	<b>97,09</b>	<b>209,17</b>	<b>53,58%</b>

## APPENDIX 2 – Competitors relations officer plan



### **Jiří Veverka**

Czech, English  
+420 773 779 255

#### **Friday 29. 6. 2018**

08:30 – 09:00	Sychrov – Administrative checks
11:00 – 13:30	Sychrov – Regrouping, lunch, chateau tour, accommodation
16:00 – 18:30	Mladá Boleslav, House of Culture – Administrative checks and scrutineering, museum tour.
18:30 – 19:30	Mladá Boleslav, House of Culture - Competitors and Officials briefing & Gala dinner
20:00 – 21:00	Mladá Boleslav, Muzeum ŠKODA AUTO – Ceremonial start, acceleration test.

#### **Saturday 30. 6. 2018**

08:30 – 09:30	Sychrov, hotel – breakfast
11:30 – 15:30	Sychrov, hotel – Regrouping IN & OUT, lunch, tracking of SS Radostín of speed rally (380 m from the hotel)
17:30 – 20:00	Sychrov, hotel – Finish of the Leg 1 (Parc Fermé IN)

#### **Sunday 1. 7. 2018**

08:30 – 09:30	Sychrov, hotel – breakfast
12:00 – 14:00	Mladá Boleslav, Old Town Square – Finish of the rally, final results
14:00 – 17:00	Mladá Boleslav, House of Culture, lunch, recharging